

Kettingwielen met taperlock boring Simplex Din 8187



3/8" x 7/32"

06-B

Ketting:

Steek 9,525 mm

Inw. breedte 5,72 mm

Rol diam. 6,35 mm

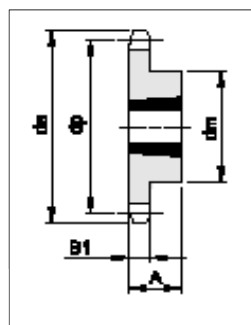
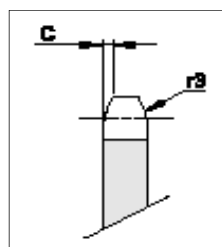
Kettingwiel:

Tand radius, r3 10 mm

Radius breedte, C 1 mm

Tand breedte, B1 5,3 mm

Z	De	Dp	dm	A	Taperlock bus
17	55,5	51,83	45	22	1008
18	58,6	54,85	45	22	1008
19	61,6	57,86	45	22	1008
20	64,6	60,89	46	22	1008
21	67,6	63,90	46	22	1008
22	70,6	66,93	55	22	1108
23	73,7	69,95	63	25	1210
24	76,7	72,97	63	25	1210
25	79,7	75,99	63	25	1210
26	82,7	79,02	63	25	1210
27	85,7	82,04	63	25	1210
28	88,8	85,07	63	25	1210
30	94,8	91,12	63	25	1210
38	119,0	115,34	70	25	1210



Kettingwielen met taperlock boring Simplex Din 8187



1/2" x 5/16"

08-B

Ketting:

Steek 12,7 mm

Inw. Breedte 7,75 mm

Rol diam. 8,51 mm

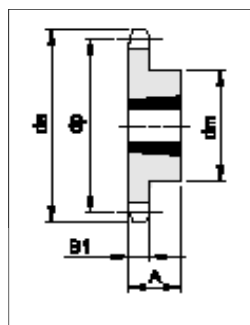
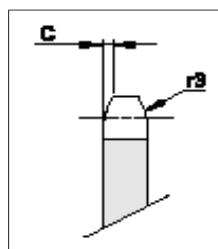
Kettingwiel:

Tand radius, r 13 mm

Radius breedte, C 1,3 mm

Tand breedte, B1 7,2 mm

Z	De	Dp	dm	A	Taperlock bus
15	66,5	61,80	45	22	1008
16	69,9	65,10	50	22	1108
17	74,5	69,11	60	25	1210
18	78,0	73,14	60	25	1210
19	82,5	77,15	63	25	1210
20	86,0	81,19	67	25	1610
21	90,6	85,21	71	25	1610
22	94,1	89,24	71	25	1610
23	98,7	93,26	76	25	1610
24	102,1	97,29	76	25	1610
25	106,7	101,32	76	25	1610
26	110,2	105,36	76	25	1610
27	114,8	109,39	76	25	1610
28	118,3	113,42	90	32	2012
30	126,9	121,49	90	32	2012
38	159,2	153,79	90	32	2012



Kettingwielen met taperlock boring Simplex Din 8187



5/8" x 3/8"

10-B

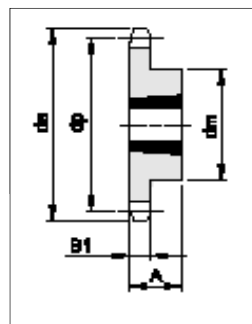
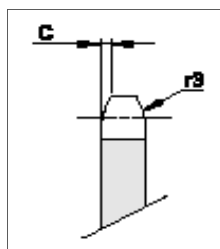
Ketting:

Steek 15,875 mm
Inw. Breedte 9,65 mm
Rol diam. 10,16 mm

Kettingwiel:

Tand radius, r 16 mm
Radius breedte, C 1,6 mm
Tand breedte, B1 9,1 mm

Z	De	Dp	dm	A	Taperlock bus
13	73,2	66,33	47	22	1008
14	78,2	71,34	52	22	1108
15	83,2	76,35	60	25	1210
16	88,3	81,37	63	25	1210
17	93,3	86,39	71	25	1610
18	98,3	91,42	71	25	1610
19	103,3	96,44	75	25	1610
20	108,4	101,49	76	25	1610
21	113,4	106,51	76	25	1610
22	118,4	111,55	76	25	1610
23	123,5	116,58	76	25	1610
24	128,5	121,62	90	32	2012
25	133,6	126,66	90	32	2012
26	138,6	131,70	90	32	2012
27	143,6	136,74	90	32	2012
28	148,7	141,78	90	32	2012
30	158,8	151,87	90	32	2012
38	199,1	192,23	100	32	2012



Kettingwielen met taperlock boring Simplex Din 8187



3/4" x 7/16"

12-B

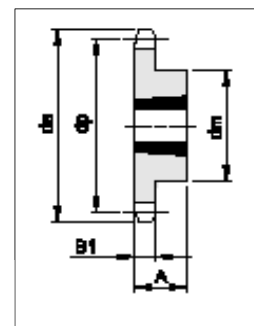
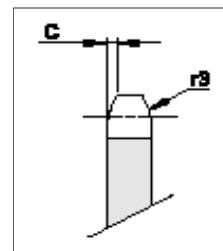
Ketting:

Steek 19,05 mm
Inw. Breedte 11,68 mm
Rol diam. 12,07 mm

Kettingwiel:

Tand radius, r 19 mm
Radius breedte, C 2 mm
Tand breedte, B1 11,1 mm

Z	De	Dp	dm	A	Taperlock bus
13	87,8	79,60	60	25	1210
14	93,8	85,61	67	25	1610
15	99,8	91,62	70	25	1610
16	105,8	97,65	71	25	1610
17	111,9	103,67	76	25	1610
18	117,9	109,71	90	32	2012
19	123,9	115,73	90	32	2012
20	130,0	121,78	90	32	2012
21	136,0	127,81	102	44	2517
22	142,0	133,86	108	44	2517
23	148,1	139,90	108	44	2517
24	154,1	145,94	108	44	2517
25	160,2	151,99	108	44	2517
26	166,2	158,04	108	44	2517
27	172,3	164,09	108	44	2517
28	178,3	170,13	108	44	2517
30	190,4	182,24	108	44	2517
38	238,9	230,69	108	44	2517



Kettingwielen met taperlock boring Simplex Din 8187



1" x 17,02 mm

16-B

Ketting:

Steek 25,4 mm

Inw. Breedte 17,02 mm

Rol diam. 15,88 mm

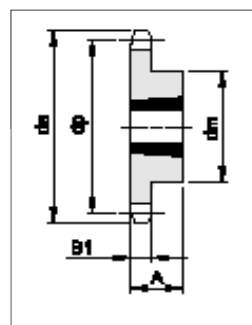
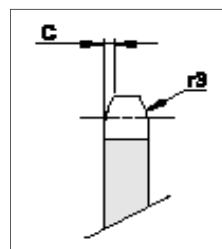
Kettingwiel:

Tand radius, r 26 mm

Radius breedte, C 2,5 mm

Tand breedte, B1 16,2 mm

Z	De	Dp	dm	A	Taperlock bus
13	117,7	106,13	73	38	1615
14	125,7	114,15	75	38	1615
15	133,7	122,16	76	38	1615
16	141,8	130,20	90	32	2012
17	149,8	138,23	90	32	2012
18	157,8	146,28	108	44	2517
19	165,9	154,31	108	44	2517
20	173,9	162,38	110	44	2517
21	182,0	170,42	110	44	2517
22	190,1	178,48	110	44	2517
23	198,1	186,53	110	44	2517
24	206,2	194,59	110	44	2517
25	214,2	202,66	110	44	2517
26	222,3	210,72	110	44	2517
27	230,4	218,79	110	44	2517
28	238,4	226,85	110	44	2517
30	254,6	242,99	120	44	2517
38	319,2	307,59	160	51	3020



Kettingwielen met taperlock boring Simplex Din 8187



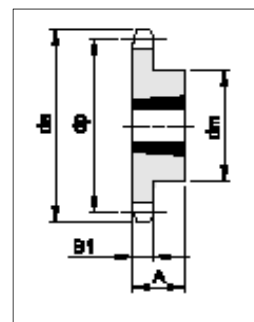
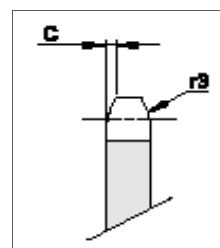
1"1/4 x 3/4
20-B

Ketting:

Steek 31,75 mm
Inw. Breedte 19,56 mm
Rol diam. 19,05 mm

Kettingwiel:

Tand radius, r 32 mm
Radius breedte, C 3,5 mm
Tand breedte, B1 18,5 mm



Z	De	Dp	dm	A	Taperlock bus
15	167,7	152,72	110	44	2517
17	187,7	172,78	110	44	2517
19	207,9	192,91	110	44	2517
21	228,0	213,04	120	44	2517
23	248,2	233,17	120	44	2517
25	268,4	253,33	120	44	2517
30	318,7	303,65	160	51	3020
38	399,4	384,49	160	51	3020